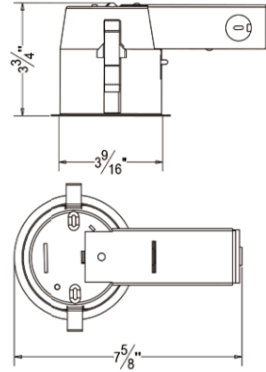


TSL-14
3.5 inch Remodel Recessed Housing

Catalog #		Prepared by Top Star Hitech Hong Kong	
Project		Date	
Notes			



Topstar
Hitech

3.5 inch Remodel Recessed Housing

Housing

- 1) Die-formed aluminum for maximum heat dissipation and rust protection
- 2) Designed for remodel installations
- 3) Housing can be installed in 1/2" to 1-3/8" thick ceilings.
- 4) Housing is Noc-IC rated must be kept at least 3" away from insulation

Junction Box

- 1) ETL listed for through branch wiring
- 2) 2 in-2 out or 4 in-4 out J-box for your better choices
- 3) Designed for straight through conduit runs
- 4) 1/2" and 3/4" romex wiring knockouts

Lamp

LED GU10 Lamp 8W max.GU10 Socket
CRI>80%
PF>0.9
Color Temperature:2700K-6500K

Listing

ETL listed for damp location W/Feed through
Other Special requirement please confirm with factory

Order Matrix

A **B** **C** **D**

Item No.:TSL-14

A Series
TSL-14 3.5"/Remodel Non-IC Housing

B Input Voltage
120V
277V

C Wattage
L3 LED 3W
L5 LED 5W

D Color Temperature
35 3500K
50 5000K
60 6000K

Recessed Downlight

Top Star Hitech Limited
Unit 31, 2/Floor, Mirador Mansion
58 Nathan Road, Tsim Sha Tsui
Kowloon, Hong Kong

TEL:+852 2359 9006 (Office)
TEL:+1 778 779 2357 (Mobile)
TEL:+852 6948 1239(WhatsApp)
E-mail:info@topstarhitech.ca

Website:www.topstarhitech.com



3.5" TRIM OPTIONS

Topstar
Hitech

Recessed Downlight



TSL-37/3.5 inch Baffle Trim
Lamp: MR16 LED GU5.3 8W Max.
GU10 LED GU10 8W Max.
PAR16 LED E26 8W Max.



TSL-38/3.5 inch Reflector Trim
Lamp: MR16 LED GU5.3 8W Max.
GU10 LED GU10 8W Max.
PAR16 LED E26 8W Max.



TSL-39/3.5 inch Eyeball Trim
Lamp: MR16 LED GU5.3 8W Max.
GU10 LED GU10 8W Max.
PAR16 LED E26 8W Max.



TSL-40/3.5 inch Slot Trim
Lamp: MR16 LED GU5.3 8W Max.
GU10 LED GU10 8W Max.
PAR16 LED E26 8W Max.



TSL-41/3.5 inch Pinhole Trim
Lamp: MR16 LED GU5.3 8W Max.
GU10 LED GU10 8W Max.
PAR16 LED E26 8W Max.



TSL-42/3.5 inch Adjustable Trim
Lamp: MR16 LED GU5.3 8W Max.
GU10 LED GU10 8W Max.
PAR16 LED E26 8W Max.




TSL-43/3.5 inch Large Gimbal Trim
Lamp: MR16 LED GU5.3 8W Max.
GU10 LED GU10 8W Max.
PAR16 LED E26 8W Max.



TSL-44/3.5 inch Shower Trim with Dome Lens
Lamp: MR16 LED GU5.3 6W Max.
GU10 LED GU10 6W Max.
PAR16 LED E26 6W Max.

Top Star Hitech Limited

 Unit 31, 2/Floor, Mirador Mansion
58 Nathan Road, Tsim Sha Tsui
Kowloon, Hong Kong

TEL:+852 2359 9006 (Office)
TEL:+1 778 779 2357 (Mobile)
TEL:+852 6948 1239(WhatsApp)
E-mail:info@topstarhitech.ca

Website:www.topstarhitech.com



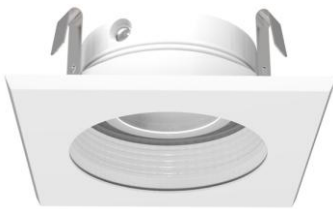
TSL-45/3.5 inch Shower Trim with Frosted Lens

Lamp: MR16 LED GU5.3 6W Max.
GU10 LED GU10 6W Max.
PAR16 LED E26 6W Max.



TSL-46/3.5 inch Square Baffle Trim

Lamp: MR16 LED GU5.3 8W Max.
GU10 LED GU10 8W Max.
PAR16 LED E26 8W Max.



TSL-47/3.5 inch Square Baffle Trim

Lamp: MR16 LED GU5.3 8W Max.
GU10 LED GU10 8W Max.
PAR16 LED E26 8W Max.



TSL-48/3.5 inch Square Reflector Trim

Lamp: MR16 LED GU5.3 8W Max.
GU10 LED GU10 8W Max.
PAR16 LED E26 8W Max.



TSL-49/3.5 inch Square Gimbal Trim

Lamp: MR16 LED GU5.3 8W Max.
PAR16 LED E26 8W Max.

